

KENNESAW STATE UNIVERSITY SCHOOL OF MUSIC

Holiday Concert
2017



Friday, December 1, 2017 at 8 pm

Dr. Bobbie Bailey & Family Performance Center, Morgan Hall

Sixty-second Concert of the 2017-18 Concert Season

program

LEROY ANDERSON (1908–1975)

Sleigh Ride (1948)

Wind Ensemble

David T. Kehler, conductor

arr. HOWARD HELVEY (b. 1968)

Ding! Dong! Merrily on High (2003)

Chorale

Chamber Singers

Judy Cole and Sherri N. Barrett, piano

Leslie J. Blackwell, conductor

J. S. BACH, arr. ALFRED REED (1921–2005)

Jesu, Joy of Man's Desiring (1981)

Wind Ensemble

David T. Kehler, conductor

BRIAN GALANTE (b. 1974)

Exsultate (2015)

Chamber Singers

Leslie J. Blackwell, conductor

arr. CLAUDE T. SMITH (1932–1987)

Rhapsody on Christmas Carols (1987)

Angels We Have Heard On High

Away In A Manger

Deck The Halls

Greensleeves

Joy To The World

O Come, O Come Immanuel

In Dulci Jubilo

Wind Ensemble

David T. Kehler

Intermission

arr. BOB KROGSTAD (1951–2015)

Christmas at the Movies

Overture from *Miracle on 34th Street*

"The Polar Express" from *The Polar Express*

"Somewhere in My Memory" from *Home Alone*

"Making Christmas" from *The Nightmare Before Christmas*

"Where are you Christmas?" from *How the Grinch Stole Christmas*

Symphony Orchestra

Nathaniel F. Parker, conductor

DAN FORREST (b. 1978)

There is Faint Music (2014)

Women's Chorus

Alison Mann, conductor

VICTOR HERBERT (1854–1924)

"March of the Toys" from the operetta *Babes in Toyland*

Symphony Orchestra

Nathaniel F. Parker, conductor

VIA OLATUNJI, arr. WILLIAM WHALUM (1931–1987)

Betelehemu (1992) Nigerian Christmas Song

Jeremiah Robinson and Lucas Gray, soloists

Men's Ensemble

Percussion Ensemble

Leslie J. Blackwell, conductor

arr. RANDOL ALAN BASS (b. 1953)

A Symphony of Carols

Chanticleer

Pat-a-Pan

Fum, Fum, Fum

Stille Nacht

Still, Still, Still

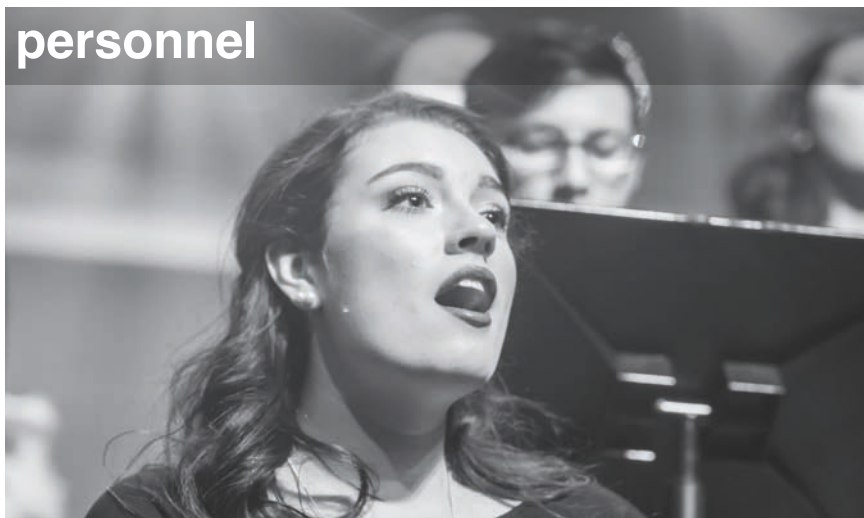
Adeste Fideles

Women's Choir, Men's Ensemble, and Chorale

Symphony Orchestra

Nathaniel F. Parker, conductor

personnel



WIND ENSEMBLE

David Kehler, Music Director and Conductor

FLUTE / PICCOLO

Corrine Veale
Lorin Green
Brittany Pietsch
Jessica Shaw

OBOE / ENGLISH

HORN

Savannah English
Rachel Rabeneck

BASSOON / CONTRA

BASSOON

Dustin Price
Grayson Saylor
Briana Curtis

CLARINET

Matthew Hodgetts
Faith Kirkpatrick
Jessica Bell
Brenden Ayestaran
Michael Korwek
Jonathan Itkin
Natalie Klein
Edie Sinclair

SAXOPHONE

Nick Leon
Andrew Shaw
Jonathan Steltzer
Mason Upshaw
Kevin Worley

HORN

Will Worthan
Haydn McAfee
Janet Johnson
Virginia Hyde

TRUMPET

Jacob Greifinger
Michael Brown
Jeremy Perkins
Jake Gearrin
Miles Bonaker

TROMBONE

Sam Boeger
Devin Witt
Kirill Wood

EUPHONIUM

Connor Sullivan
Mike Long
Andrew Berry

TUBA

Kobe Greene
Nick Collins

PERCUSSION

Joe Donohue
Josh Bouland
Mary Madison Jones
Michael Ollman
Michael Makrides
Christopher Bowers

HARP

Teresa Sheppard

SYMPHONY ORCHESTRA

Nathaniel F. Parker, Music Director and Conductor

FLUTE

Lorin Green
Brittany Pietsch
Corinne Veale, *principal*

PICCOLO

Lorin Green
Brittany Pietsch

OBOE

Amelia Lee, *principal*
Christina Pacetti

ENGLISH HORN

Rachel Rabeneck

CLARINET

Jessica Bell, *principal*
Faith Kirkpatrick

BASS CLARINET

Matthew Hodgetts

BASSOON

Briana Curtis
Dustin Price, *principal*

CONTRABASSOON

Grayson Saylor

HORN

Virginia Hyde
Janet Johnson
Haydn McAfee, *principal*
William Worthan

TRUMPET

Jon Klausman, *principal*
Jordyn Mader
Andrew Olsen

TENOR TROMBONE

Matt Scott, *principal*
Victoria Shrote

BASS TROMBONE

Trevor Hassell

TUBA

Kobe Greene

TIMPANI

Josh Bouland
Joe Donohue

PERCUSSION

Josh Bouland
Christopher Bowers
Joe Donohue
Mary Madison Jones
Michael Makrides
Michael Ollman

HARP

Laurel Buchanan

KEYBOARD

Jordan Sommer

VIOLIN

Zoë Cesar
Kynan Clymore
Mary Catherine Davis
Nassar Edwards
Nicholas Felder
Ryan Finlayson
Jenna Flohr
Lauren Greene
Mary Katharine Guthrie,
associate concertmaster
Milan Haddad
Bethany Johnston,
associate principal

VIOLIN (cont.)

Rachel LaRocca
Huijeong Lee
Jung Hyun Lim
Matthew Marcacci
Charles Page
Michael Parrish
Justin Rawlings,
principal
Nathaniel Roberts,
concertmaster

VIOLA

Rachel Fishback,
principal
Elijah Mastinu
Brianna Spottsville,
associate principal
Jachai Wilmont

CELLO

Joseph Grunkemeyer
Lacee Link, *principal*
Cora Meador
Anthony Newman
Gabriella Paul, *associate principal*
Nino Pogorelova
Michael Roberts
Dorian Silva

BASS

Asuria Austin, *associate principal*
Daniel Kim, *principal*

SYMPHONY ASSISTANTS

Rachel LaRocca
Gabriella Paul
Michael Roberts

CHAMBER SINGERS

Leslie J. Blackwell, conductor

SOPRANO

Emma Bryant
Mary Allison Hamby
Emily Hering
Molly Jennings
Sierra Manson
Claire Pappas
Callaway Powlus
Nasia Shearod

ALTO

Ashley Hudson
Ziara Greene
Ericka Palmer
Lindsay Peterson

ALTO (cont.)

Regan Romuno
Abigail Snyder
Macy Swanson
Tessa Walker
Deondria West

TENOR

Brandon Cali
Taylor Hall
Anthony Morris
Jeremiah Robinson
Caleb Stack
Michael Stewart
Jared Weatherford

BASS

Marcel Benoit III
Lucas Gray
Kevin Loggins
Nick O'Neill
Cody O'Shea
Trevor Walker
Matthew Welsh

UNIVERSITY CHORALE

Leslie J. Blackwell, conductor

SOPRANO

Tori Anderson
Daneel Bennett
Colby Blick
Laurn Davis
Xandy Edwards
Lily Ko
Claire Livingston
Sierra Manson
Kayla Marks
Tatyana Popovych
Emma Raboine
Marielle Reed
Lindsey Sanders
Janelle Schultz
Sarah Seippel
Elizabeth Shaver
Sarah Shiver
Hannah Smith
Allie Szatmary
Talbot Tindall-Balch
Chloe Turner
Naomi Williams

ALTO

Simona Cofrancesco
Joi Crump
Ashlyn Dewberry
Lauren Faulkner
Talia Gallagher
Aislinn Gastiaburo
Allis Gilstrap
Alejandra Hillier
Joey Jacques
Deanna Johnson
Becky Medina
Hannah Norton
Lulu Pearce

TENOR

Matthew Boatwright
Matthew Burley
Jesse Cook
Connor Finton
Dylan Peltonen
Jacob Stewart
Michael Stewart

BASS

Miles Clayton
Michael Eggert
Dean Emert
Blake Emmons
Andrew Hughes
David Maulding
Steven Mayo
Colin McGarr
Benjamin Miller
Kenan Mitchell
Kyle Robinson

WOMEN'S CHOIR

Alison Mann, conductor

SOPRANO 1

Karen Couvillon
Megan Crosby
Hannah Elliott
Ashley Hudson
Claire Livingston
Kaitlin Maginnis
Anne Michalove
Lindsey Sanders
Elizabeth Shaver
Tyler Storey

SOPRANO 2

Daneel Bennett
Colby Blick
Taylor Campbell
Caty Mae Loomis
Crystal Maldonado
Kayla Marks
Madeline Meinert
Marielle Reed

SOPRANO 2 (cont.)

Regan Romuno
Nasia Shearod
Teresa Sheppard
Ayana Thomas
Madelyne Watkins
Niccole Winney

ALTO 1

Emma Calhoun
Rebekah Clegg
Lauren Faulkner
Talia Gallagher
Aislinn Gastiaburo
Ziara Greene
Faith Hortenstine
Becky Medina
Ericka Palmer
April Schlinkert
Heather Towhey
Graciela Vera

ALTO 2

Savana Chapman
Allie Hillier
Emma Kirwin
Deborah Matthew
Sarah McPherson
Hannah Norton
Katherine Thomas

MEN'S ENSEMBLE

Leslie J. Blackwell, conductor

TENOR 1

Brandon Cali
Anthony Morris
Jeremiah Robinson
Travis St. Dic
Caleb Stack
Alex Turner
Jared Weatherford

TENOR 2

Matthew Boatwright
Connor Finton
Gregor Haas
Taylor Hall
Tyler Lane
Dylan Peltonen

TENOR 2 (cont.)

Joss Stark
Jacob Stewart
Michael Stewart

BARITONE

Andrew Bland
Riley Carson
Will Garret
Lucas Gray
Jack Grisham
Cody O'Shea
Michael Risacher
Kyle Robinson
Jeremy Valore

BASS

Marcel Benoit III
Jacob Chalk-Hildreth
Jake Drukman
Patrick Dudley
Abisai Pena
Jimmy Roberts
Trevor Walker
Matthew Welsh

biographies

Leslie J. Blackwell is the Director of Choral Activities and Professor of Music and Music Education at Kennesaw State University where she has directed choral activities since 1998. Dr. Blackwell's duties include



conducting the KSU Men's Ensemble, KSU Chorale, and KSU Chamber Singers as well as teaching advanced choral conducting and literature. A native of Georgia, Blackwell received the Associate of Arts degree from Gordon Junior College (1982), the Bachelor of Music in Music Education from West Georgia College (1984), the Master of Music from Georgia State University (1991), and the Doctor of Musical Arts degree from the University of Kentucky (2002).

Choirs under Dr. Blackwell's direction have performed at National, Regional, and State conferences of the American Choral Directors Association, National Conferences of the National Collegiate Choral Organization National Conference as well as numerous Georgia Music Educators Association State Conventions. The KSU Chamber Singers are slated to perform at the 2018 Georgia Music Educators Conference this January.

Recognized for her work with men's voices, Dr. Blackwell served six seasons as the Artistic Director of the Atlanta Gay Men's Chorus. She established the annual KSU Male Chorus Day at Kennesaw State University, bringing upwards of 200 high school male students to campus. Dr. Blackwell is sought after as a guest conductor for All-State Men's Chorus around the country. Under Dr. Blackwell's direction the KSU Men's Ensemble, a non-auditioned ensemble, has achieved prestigious accomplishments on a State, Regional, and National stage. The KSU Men's Ensemble was selected to perform at the 2013 American Choral Directors National Conference in Dallas, Texas, the 2014 and 2016 American Choral Directors Southern Division Conferences.

David T. Kehler has served as Music Director and Conductor of the KSU Wind Ensemble since 2009. In addition, Dr. Kehler teaches courses in instrumental conducting, symphonic repertoire, and 20th century music. Along with his university responsibilities, professor Kehler currently serves as Music Director and Conductor of the Atlanta Wind Symphony, and as Vice-President for the College Band Directors National Association-Southern Division.

An advocate of new music, Professor Kehler has commissioned nearly two-dozen leading composers, including several Pulitzer Prize winners to



write new compositions for wind ensemble. During these commissions, composers often come to KSU, working directly with the KSU Wind Ensemble as they prepare the premiere of these new works. Performing music beyond the KSU campus, the KSU Wind Ensemble can also be heard frequently on *90.1, Atlanta Public Radio*, along with having been a featured ensemble at the College Band Director's National Association Convention (two times), and most recently at the 2016 GMEA State Conference, in Athens, Georgia. In 2013, the KSU Wind Ensemble won the *American Prize* for best university wind ensemble/concert band recording in the United States.

Previously, Dr. Kehler served as Associate Conductor of America's Premiere Windband; The Dallas Winds, and served as Founder and Conductor of the Greater Dallas Youth Orchestra Wind Symphony. Previous academic appointments were at Southern Methodist University, the University of Rhode Island, and Bay City Western High School, in Bay City, Michigan. Growing up in Michigan, Dr. Kehler received his Bachelor of Music Education and Master of Music in Conducting degrees from Michigan State University, followed by his Doctorate of Musical Arts degree in instrumental conducting from the University of Texas at Austin.

Alison Mann is Associate Professor of Choral Music Education and Program Coordinator for Music Education at Kennesaw State University where she teaches coursework in Choral Methods, Advanced Choral



Conducting and Literature, Foundations of Music Education, and Vocal Pedagogy for Ensemble Singing. Mann also supervises student teachers, coordinates edTPA, and serves as Conductor of the KSU Women's Choir. Additionally, she is a founding singer and personnel manager for Atlanta based professional chamber choir, Coro Vocati.

Dr. Mann received her Ph.D. in Music Education and Choral Conducting from the University of Oregon, and a Masters of Choral Music Education and Bachelors of Choral Music Education from Florida State University. Dr. Mann has studied conducting and music education with André Thomas, Kevin Fenton, Sharon J. Paul, and Judy Bowers. Dr. Mann is currently the

Southern Division ACDA Women's Choir Repertoire and Standards chair, and the Georgia state ACDA Membership Chair. She serves on the executive planning committee for the Southern Division American Choral Directors Association. Her professional affiliations include the American Choral Directors Association, National Association for Music Education, Georgia Music Educators Association, National Collegiate Choral Organization, and the International Society for Music Education. Her research has been presented at the state, regional, and international levels. Dr. Mann is an active conductor, clinician, and adjudicator, and has conducted state ACDA honor choirs, and All State choruses in multiple states.

Nathaniel F. Parker, a talented and versatile musician, has conducted Orchestras in the United States, Peru, Russia, Poland, England, and the Czech Republic. Equally at home working with professionals and training future generations of musicians, Dr. Parker is Director of Orchestral



Studies at the Kennesaw State University School of Music—serving as Music Director and Conductor of the Kennesaw State University Symphony Orchestra and Conductor of the Kennesaw State University Opera Program—and Associate Conductor of the Georgia Symphony Orchestra.

Dr. Parker is the recipient of numerous honors, awards, and scholarships. He was named a finalist for a Conducting Fellowship with the New World Symphony, a semi-finalist for a Conducting

Fellowship at Tanglewood, and a Candidate for the Respighi Prize in Conducting; he also received a Citation of Excellence in Teaching from the Pennsylvania Music Educators Association. An active scholar, Dr. Parker's writings have been published by the Conductors Guild and the College Orchestra Directors Association (CODA). He has presented research at the College Orchestra Directors Association's national and international conferences and is Editor of the Journal of the Conductors Guild.

Parker earned a Doctor of Musical Arts in Orchestral Conducting from Michigan State University where he studied with Leon Gregorian and Raphael Jiménez, a Master of Music in Orchestral Conducting from Bowling Green State University where he studied with Emily Freeman Brown, and Bachelor of Music in Bassoon Performance from Arizona State University where he studied with Jeffrey G. Lyman. For more information, please visit www.nathanielfparker.com.

SCHOOL OF MUSIC FACULTY AND STAFF

Stephen W. Plate, *Director*

Music Education

Judith Beale	Harry Price
Janet Boner	Terri Talley
Nancy Conley	Paula Thomas-Lee
Kathleen Creasy	Charles Tighe
Charles Jackson	Amber Weldon-
Alison Mann	Stephens
Angela McKee	
Richard McKee	

Music History & Appreciation

Drew Dolan	Heather Hart
Edward Eanes	Kayleen Justus

Music Theory, Composition, Technology

Judith Cole	Laurence Sherr
Steve Dancz	Benjamin
Kelly Francis	Wadsworth
Jennifer Mitchell	Jeff Yunek

Woodwinds

Kelly Bryant, *Flute, Chamber Music*
Robert Cronin, *Flute*
Todd Skitch, *Flute*
Christina Smith, *Flute*
Cecilia Price, *Flute, Chamber Music*
Barbara Cook, *Oboe*
Elizabeth Koch Tiscione, *Oboe*
John Warren, *Clarinet, Chamber Music*
Andrew Brady, *Bassoon*
Sam Skelton, *Saxophone*
Luke Weathington, *Saxophone*

Brass & Percussion

Doug Lindsey, *Trumpet, Chamber Music*
Ryan Moser, *Trumpet*
Mike Tiscione, *Trumpet*
Jason Eklund, *Horn*
Richard Williams, *Horn*
Tom Gibson, *Trombone*
Nathan Zgonc, *Trombone*
Brian Hecht, *Bass Trombone*
Jason Casanova, *Tuba / Euphonium*
Paul Dickinson, *Tuba / Euphonium*
Marja Kerney, *Percussion*
John Lawless, *Percussion*

Strings

Helen Kim, *Violin*
Kenn Wagner, *Violin, Chamber Music*
Stephen Majeske, *Orchestral Studies*
Catherine Lynn, *Viola*
Paul Murphy, *Viola*
Charae Krueger, *Cello*
James Barket, *Double Bass*
Joseph McFadden, *Double Bass*
Elisabeth Remy Johnson, *Harp*
Mary Akerman, *Classical Guitar*

Voice

Jessica Jones	Valerie Walters
Eileen Moremen	Todd Wedge
Oral Moses	Jana Young
Nathan Munson	

Piano

Judith Cole, *Collaborative Piano*
Erika Tazawa, *Collaborative Piano*
Julie Coucheron
Robert Henry
Huu Mai
John Marsh

Jazz

Justin Chesarek, *Jazz Percussion*
Wes Funderburk, *Jazz Trombone, Jazz Ensembles*
Karla Harris, *Vocal Jazz*
Tyrone Jackson, *Jazz Piano*
Marc Miller, *Jazz Bass*
Sam Skelton, *Jazz Ensembles*
Rob Opitz, *Jazz Trumpet*
Trey Wright, *Jazz Guitar, Jazz Combos*

Ensembles & Conductors

Leslie J. Blackwell, *Choral Activities*
Nancy Conley, *Philharmonic Orchestra*
Trey Harris, *University Band, Marching Band*
Alison Mann, *Choral Activities*
Oral Moses, *Gospel Choir*
Eileen Moremen, *Opera*
Nathaniel F. Parker, *Symphony Orchestra*
Debra Traficante, *Wind Symphony, Marching Band*
David T. Kehler, *Wind Ensemble*

School of Music Staff

Julia Becker, *Administrative Associate*
Susan M. Grant Robinson, *Associate Director for Administration*
Joseph Greenway, *Assistant Director for Production & Technology*
Dan Hesketh, *Assistant Director for Marketing and Outreach*
June Mauser, *Administrative Associate*
Daniel Pattillo, *Technical Manager*
Richard Peluso, *Coordinator of Band Operations and Outreach*
Shawn Rieschl Johnson, *Associate Director for Operations & Programming*

Ensembles in Residence

KSU Faculty Jazz Parliament
Georgia Youth Symphony Orchestra and Chorus
KSU Faculty Chamber Players
Summit Piano Trio
KSU Community and Alumni Choir

about the school of music



Welcome to the Bailey Performance Center!

The School of Music at Kennesaw State University is an exciting place! We have a wonderful slate of performances planned for this year's *Signature Series*, and if you have not yet purchased your season tickets, I encourage you to do so as soon as possible. The Atlanta Symphony returns again this year as well as a wonderful slate of other performances.

The Dr. Bobbie Bailey & Family Performance Center is celebrating its 10th Anniversary Season this year. When this building opened in October of 2007, it was transformational for the School of Music and for KSU! It continues to be a jewel in our crown and musicians from around the world love to perform here because of the wonderful acoustic properties of Morgan Hall.

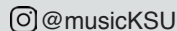
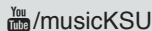
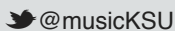
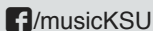
We would love to have you join us the weekend of October 7th-8th. We will have an alumni recital on the 7th and a grand celebration Sunday afternoon October 8th, with full choir and orchestra to celebrate all this Center has meant to us these past 10 years! In honor of the Bailey 10th Anniversary, we will officially launch our *Name a Seat Campaign* during our celebration in October. What a wonderful way to honor a loved one or to provide for future programming for Morgan Hall.

I look forward to a long and rewarding relationship with you. With your continued support of music and the arts, I look forward to all that we will accomplish together!

A handwritten signature in black ink that reads "Stephen W. Plate".

Stephen W. Plate, DMA
Director, KSU School of Music

connect with us



musicKSU.com

Visit the Live Streaming page on musicKSU.com to watch live broadcasts of many of our concerts and to view the full schedule of upcoming live streamed events.

Please consider a gift to the Kennesaw State University School of Music.

<http://community.kennesaw.edu/GiveToMusic>