



School of Music

presents

CAPSTONE LECTURE RECITAL

**The Twelve-tone Music
Of Anton Webern**

Brett Carson, piano

Saturday, December 13, 2008

6:30 pm

Music Building Recital Hall

Thirty-seventh Concert of the 2008-2009 season

**Kennesaw State University
School of Music**

CAPSTONE LECTURE RECITAL

Brett Carson, piano

December 13, 2008

6:30 pm

Music Building Recital hall

PROGRAM

Variations for Piano, Op. 27

Anton Webern
(1883-1945)

Sehr mässig
Sehr schnell
Ruhig fliessend

This lecture recital is presented in partial fulfillment of requirements for the degree
Bachelor of Arts in Music.
Mr. Carson is a student of David Watkins.

Kennesaw State University

Upcoming Music Events

Tuesday, January 13, 2009

Kennesaw State University Faculty Artist Recital

Helen Kim, violin

with Robert Henry, piano

8:00 pm • Bailey Performance Center Performance Hall

Friday, January 16, 2009

Kennesaw State University Faculty Artist Recital

David Watkins, piano

8:00 pm • Bailey Performance Center Performance Hall

Monday, January 19, 2009

Kennesaw State University

Chamber Players

Martin Luther King, Jr. Day Concert

8:00 pm • Bailey Performance Center Performance Hall

Thursday, February 12, 2009

Kennesaw State University

Jazz Ensembles

8:00 pm • Bailey Performance Center Performance Hall

Monday, February 16, 2009

Kennesaw State University

Concert Band and Wind Ensemble

8:00 pm • Bailey Performance Center Performance Hall

Wednesday, February 18, 2009

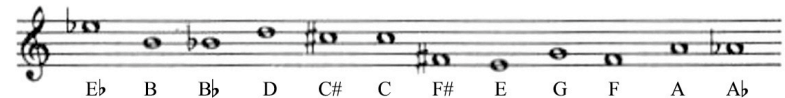
Kennesaw State University

Symphony Orchestra

8:00 pm • Bailey Performance Center Performance Hall

For the most current information, please visit
<http://www.kennesaw.edu/arts/events/>

		Inversion (I)													
		10	8	7	11	10	9	3	1	4	2	6	5		
Prime (P)	P0	E \flat	B	B \flat	D	C \sharp	C	F \sharp	E	G	F	A	A \flat	R0	
	4	G	E \flat	D	F \sharp	F	E	B \flat	A \flat	B	A	C \sharp	C	4	
	5	A \flat	E	E \flat	G	F \sharp	F	B	A	C	B \flat	D	C \sharp	5	
	1	E	C	B	E \flat	D	C \sharp	G	F	A \flat	F \sharp	B \flat	A	1	
	2	F	C \sharp	C	E	E \flat	D	A \flat	F \sharp	A	G	B	B \flat	2	
	3	F \sharp	D	C \sharp	F	E	E \flat	A	G	B \flat	A \flat	C	B	3	
	9	C	A \flat	G	B	B \flat	A	E \flat	C \sharp	E	D	F \sharp	F	9	
	11	D	B \flat	A	C \sharp	C	B	F	E \flat	F \sharp	E	A \flat	G	11	
	8	B	G	F \sharp	B \flat	A	A \flat	D	C	E \flat	C \sharp	F	E	8	
	10	C \sharp	A	A \flat	C	B	B \flat	E	D	F	E \flat	G	F \sharp	10	
	6	A	F	E	A \flat	G	F \sharp	C	B \flat	C \sharp	B	E \flat	D	6	
	7	B \flat	F \sharp	F	A	A \flat	G	C \sharp	B	D	C	E	E \flat	7	
		R10	8	7	11	10	9	3	1	4	2	6	5		
		Retrograde (R)													
		Retrograde-Inversion (RI)													



*Twelve-tone matrix, and untransposed prime row
 for Variations for Piano, Opus 27*

Formal Structures

- | | |
|-------------------|--------------------|
| 1. Sehr mässig | Sonata form (ABA') |
| 2. Sehr schnell | Binary form (AABB) |
| 3. Ruhig fließend | Variations form |

Sehr mäßig ♩ = ca 40

R8:

P8:

R18:

I8: (1)

Mm 1-10, first movement

Sehr schnell ♩ = ca 160

RO: 1

RI0: 1

Mm 1-5, second movement

Ruhig fließend ♩ = ca 80

PO: 1

I0: 1

Mm 1-6, third movement

Music at Kennesaw State University

Whether you seek a conservatory-like experience, are looking to become a dedicated and effective educator, or have a strong interest in music but want to balance that with other academic interests, the School of Music is the place for you. If you are interested in performance you benefit from world-class instruction, vibrant and challenging performance opportunities, and the chance to immerse yourself in metropolitan Atlanta's rich musical culture. The School of Music is also a vital training ground for music teachers. KSU graduates a significant number of the teachers who keep music in Georgia schools vital and alive. If you seek a broader academic experience, we offer a Bachelor of Arts in Music, which allows you to take advantage of more of the academic opportunities at KSU. We stage more than 100 performances each year, from chamber music to full orchestra, choral and wind ensemble concerts, and musical theatre and opera productions, with repertoire from traditional classical to modern jazz. So if you are looking for an excellent place to challenge yourself in a nurturing and supportive environment, look no further than the School of Music at Kennesaw State!

Arts at Kennesaw State University

Imagine a place where world-class music ensembles, celebrated works of art, and powerful theater pieces come together in a dynamic arts environment. A place where students work closely with an outstanding faculty dedicated to their success. A place where students benefit from regular appearances of internationally acclaimed guest artists from the world's most prestigious stages, opera houses, and museums. The College of the Arts at Kennesaw State University is all this, and more!

Come and explore the opportunities that will be available to you just north of Atlanta on the KSU campus. Whether you paint, perform, draw, design, dance or sing, the College of the Arts at Kennesaw State is the right place for you.