

Monday, September 22, 2014 at 8:00 p.m.

Dr. Bobbie Bailey & Family Performance Center, Morgan Hall

Ninth Concert of the 2014-15 Concert Season

Guest Artist Recital

William Johnston, viola

with Tim Whitehead, piano

FRANZ SCHUBERT (1797-1828)

Sonata in A minor, D. 821 “Arpeggione”

Allergro moderato

Adagio

Allegretto

ENRIQUE GRANADOS (1867-1916)

Spanish Dance No. 2: *Oriente*

MARK GRESHAM (b. 1956)

Café Cortadito (2012)

MANUEL DE FALLA (1876-1946)

Popular Spanish Songs

Nana

Jota

Intermission

GERALD BUSBY (b. 1935)

Suite for Viola and Piano

- I. Introit
- II. Ricercar
- III. Sarabande
- IV. Passepied

** 2011 World Premiere*

GEORGE GERSHWIN (1898-1937)

trans. Heifetz/Johnston

Selections from ***Porgy and Bess***

- “My Man’s Gone Now”
- “It Ain’t Necessarily So”
- “Tempo di Blues”

biographies



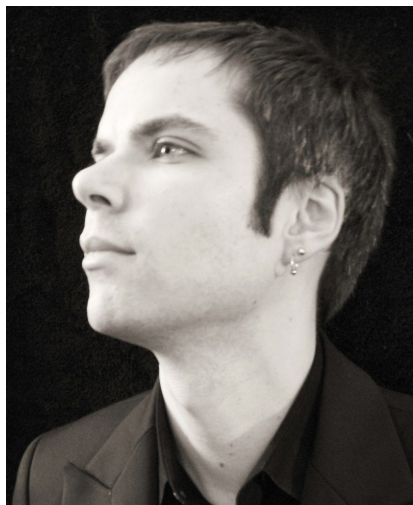
photo by Jesse Kramer

William Johnston leads a varied career as a violist and educator based in Atlanta. Praised for his "richly lyrical tone and expressive playing" (Art-sATL.com), he has performed at the Primrose International Viola Festival and makes his solo debut with the San Jose Chamber Orchestra in 2015. He is also heard frequently as a chamber musician in Atlanta, performing at the Molly Blank Jewish Concert Series, Fringe, Sonic Generator, Emory University, and Eddie's Attic. William is in demand as an orchestral musician, serving as principal violist of The Atlanta Opera and working with major orchestras in the Southeast, including the Sarasota Orchestra, Na-

ples Philharmonic, and Atlanta Symphony Orchestra. He has performed at many summer festivals, including Aspen, Kent/Blossom, Sarasota, and as principal violist of the Utah Festival Opera.

William is equally committed to music education. He has presented masterclasses at the Primrose International Viola Festival and numerous colleges and universities, and currently maintains a private studio in Atlanta. He is the Program Coordinator and a faculty member of Franklin Pond Chamber Music, a year-round chamber music program for talented young string students. William is a registered Suzuki teacher and completed long-term teacher training in books 1-4 at the Cleveland Institute of Music, and is currently training with Andover Educators to become a licensed instructor of Body Mapping, a method of preventing injury and enhancing performance by providing accurate information about the body in movement.

William is a native of Sarasota, Florida and graduated from Pine View School in Osprey. Beginning music lessons with the piano at age four, he later studied the viola with Dorothy Stahler, Alison Heydt, Victoria Chiang, James Dunham, and Robert Vernon. He is a graduate of the Peabody Institute and Rice University, and is the first violist to receive the Doctor of Musical Arts degree from the Cleveland Institute of Music.



Tim Whitehead, American pianist and artist of many facets, is a graduate of The Eastman School of Music and has been both a long and short term resident artist at The Banff Centre in Alberta, Canada. He has performed throughout the United States, Canada, and Western Europe, and has been heard on National Public Radio, the Canadian Broadcasting Corporation's ZedTV, and Radio Suisse Romande. His performance at TedTalks in 2011 was broadcast live internationally. In 2010 he was appointed pianist in Sonic Generator, new music ensemble

in residence at The Georgia Institute of Technology. Mr. Whitehead is a laureate of the Academie de Musique de Lausanne, has been presented in recital at The Holland Music Sessions, and has held staff piano positions at Bennington College and The Quartet Program at Bucknell University. He was the featured pianist in the 2012 world premiere of choreographer Twyla Tharp's ballet *The Princess and the Goblin*. Two consecutive summers were spent as a faculty member at Point CounterPoint Chamber Music festival in Vermont. As a chamber musician, he has shared the stage with such eminent talents as violinist Charles Castleman, cellist Bonnie Hampton, flutists Gergeley Ittzes, Paula Robison, and Gary Schocker, faculty members of the Juilliard and Eastman Schools, New England Conservatory, the Franz Liszt Academy, founding members of the Chamber Music Society of Lincoln Center, members of the New York Philharmonic, and principals of the Atlanta Symphony Orchestra, Calgary Philharmonic, and Melbourne Opera. He is a frequent chamber partner to members of the ASO, and while still in school was awarded Chamber Music honors by the Eastman faculty. With an extensive repertoire of over 700 major works, he has performed complete cycles of the sonatas for Piano and Violin by both Beethoven and Brahms, as well as the Cello and Clarinet sonatas of Brahms. As a student of the solo repertoire, his primary teacher was Thomas Schumacher; his collaborative skills were honed by further studies with Jean Barr. As an accompanist, he has twice played for the ASTA Young Artist Competition National finals. Mr. Whitehead's work as a recording artist can be heard on the Azica label, and his new solo album of the three sonatas of Paul Hindemith is forthcoming in 2014. A dedicated teacher, he is currently a member of the piano faculty of The Georgia Institute of Technology, as well as The Georgia Academy of Music.

School of Music Faculty and Staff

Music Education

Judith Beale
Janet Boner
Kathleen Creasy
John Culvahouse
Charles Jackson
Charles Laux
Alison Mann
Angela McKee
Richard McKee
Harry Price
Terri Talley
Amber Weldon-Stephens

Music History & Appreciation

Drew Dolan
Edward Eanes
Kayleen Justus
Dane Philipsen

Music Theory, Composition & Technology

Kelly Francis
Jennifer Mitchell
Laurence Sherr
Benjamin Wadsworth
Jeff Yunek

Woodwinds

Robert Cronin, Flute
Todd Skitch, Flute
Christina Smith, Flute
Elizabeth Koch Tiscione, Oboe
John Warren, Clarinet, Chamber Music
Laura Najarian, Bassoon
Sam Skelton, Saxophone

Brass and Percussion

Doug Lindsey, Trumpet, Chamber Music
Mike Tiscione, Trumpet
Jason Eklund, Horn
Thomas Witte, Horn
Tom Gibson, Trombone
Brian Hecht, Bass Trombone
Bernard Flythe, Tuba/Euphonium
John Lawless, Percussion

Strings

Helen Kim, Violin
Kenn Wagner, Violin
Catherine Lynn, Viola
Allyson Fleck, Viola, Chamber Music
Charae Krueger, Cello
James Barket, Double Bass
Joseph McFadden, Double Bass
Elisabeth Remy Johnson, Harp
Mary Akerman, Classical Guitar

Voice

Jessica Jones
Adam Kirkpatrick
Eileen Moremen
Oral Moses
Leah Partridge
Valerie Walters
Jana Young

Piano

Judith Cole, Collaborative Piano & Musical
Theatre
Julie Coucheron
Robert Henry
John Marsh, Class Piano
David Watkins
Soohyun Yun

Jazz

Justin Chesarek, Jazz Percussion
Wes Funderburk, Jazz Trombone, Jazz
Ensembles
Tyrone Jackson, Jazz Piano
Marc Miller, Jazz Bass
Sam Skelton, Jazz Ensembles
Lester Walker, Jazz Trumpet
Trey Wright, Jazz Guitar, Jazz Combos

Ensembles & Conductors

Leslie J. Blackwell, Choral Activities
Alison Mann, Choral Activities
Oral Moses, Gospel Choir
Eileen Moremen, Opera
Michael Alexander, Orchestras
Charles Laux, Orchestras
Debra Traficante, Concert Band
David T. Kehler, Wind Ensemble

School of Music Staff

Julia Becker, Administrative Specialist III
David Daly, Director of Programming and
Facilities
Susan M. Grant Robinson, Associate
Director for Administration
Joseph Greenway, Technical Director
Dan Hesketh, Digital Media Specialist
June Mauser, Administrative Associate II
Andrew Solomonson, Facility Operations
Manager

Ensembles in Residence

Atlanta Percussion Trio
Faculty Jazz Parliament
Georgia Youth Symphony Orchestra
and Chorus
KSU Faculty Chamber Players
KSU Faculty String Trio
KSU Community and Alumni Choir

Kennesaw State University School of Music

The School of Music at KSU has dedicated, vibrant, and talented faculty and staff that are completely devoted to teaching, performing, scholarship, and serving our community. It is an incredibly exciting place to study, boasting state-of-the-art facilities with opportunities to produce and explore music in a dynamic place that is ahead of the curve for what it means to be a musician in the 21st century. Our students come from the leading musical honor organizations across the region and are poised to lead the cultural offerings and musical education in our area and beyond for years to come.

We welcome you to attend a concert, meet our faculty and staff, and feel the energy and excitement that our students exude. We are fully committed to our purpose as educators, performers, and scholars. We hope that you will find as much enjoyment in our product as we do in producing it.



Michael Alexander
Interim Director, KSU School of Music

Connect with the School of Music

For more information about the School of Music, connect with us online at the websites below. Tweet us during tonight's concert from Morgan Hall's Tweet Seats to connect with fellow concertgoers during the performance.

facebook.com/musicKSU twitter.com/musicKSU youtube.com/musicKSU
ksutv.kennesaw.edu/musicKSU musicKSU.com

Please consider a gift to the Kennesaw State University School of Music.
<http://community.kennesaw.edu/GiveToMusic>

upcoming events

Unless otherwise noted, all events will take place at 8:00 pm in Morgan Concert Hall.

Tuesday, September 23
Faculty Recital: Mary Akerman, guitar

Tuesday, September 30
Philharmonic and Concert Band

Thursday, September 25
Jazz Ensembles

Thursday, October 2
**University Chorale, Women's Choir with
Northwestern Middle School Chorus**

Friday, September 26
Atlanta Symphony Orchestra

Monday, October 6
Faculty Recital: Soohyun Yun, piano

Monday, September 29
Faculty String Trio

Wednesday, October 8
KSU Symphony Orchestra

We welcome all guests with special needs and offer the following services: easy access, companion seating locations, accessible restrooms, and assisted listening devices. Please contact a patron services representative at 470-578-6650 to request services.